

Year 1 Knowledge Organizer Spring 2

Why do we remember Richard Trevithick in Cornwall?

History

Richard Trevithick

- Born - 1771.
- He became an engineer and worked at Ding-Dong mine.
- Built the world's first steam road vehicle called 'The Puffin' Devil'.
- His steam locomotive made the world's first rail journey.
- His Cornish Engine was used in mines across Cornwall.



Design Technology & Science

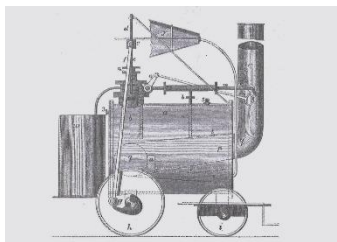
Look at different types of vehicles that have moving wheels and identify an axle, wheel and axle holder.

Know how to fix a broken wheel so that it turns again.

Draw a model of a moving vehicle and choose the materials needed to create it.

Materials can be hard, soft, flexible, strong and weak.

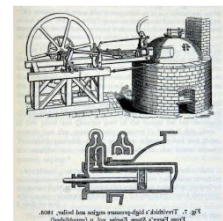
Decide which materials are the best for objects to be made from e.g. we make wheels for our moving vehicles from strong materials like wood and not paper.



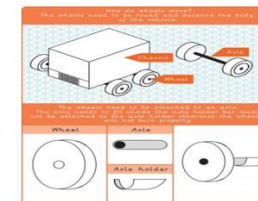
The Puffin' Devil.



First steam locomotive.



The Cornish Engine.



Vocabulary

account	A report or description of an event.
engineer	A person who designs and builds engines, machines, and structures.
living memory- beyond living memory-	A time that can be remembered by people who are still alive. A time that relies on written accounts to remember events.
locomotive	A rail transport vehicle.
pioneer	To be one of the first people to do something.

Vocabulary

axle	A long straight rod which connects to a moving part, such as a wheel.
axle holder	The part that holds the axle steady.
chassis	The body of a car.
fix	To repair something that isn't working.
material	What something is made from.
test	Find out if something works as it should.
wheel	A circular object that is fixed to something (like a car or bike) and allows it to move smoothly over the ground.